

Smart Meter-Master

Versatile Interface Device

Make any meter a Smart Meter

Connect any sensor to your AMR/AMI network

Portable Data Logger

Brad Brainard, F.S. Brainard & Co

www.meter-master.com

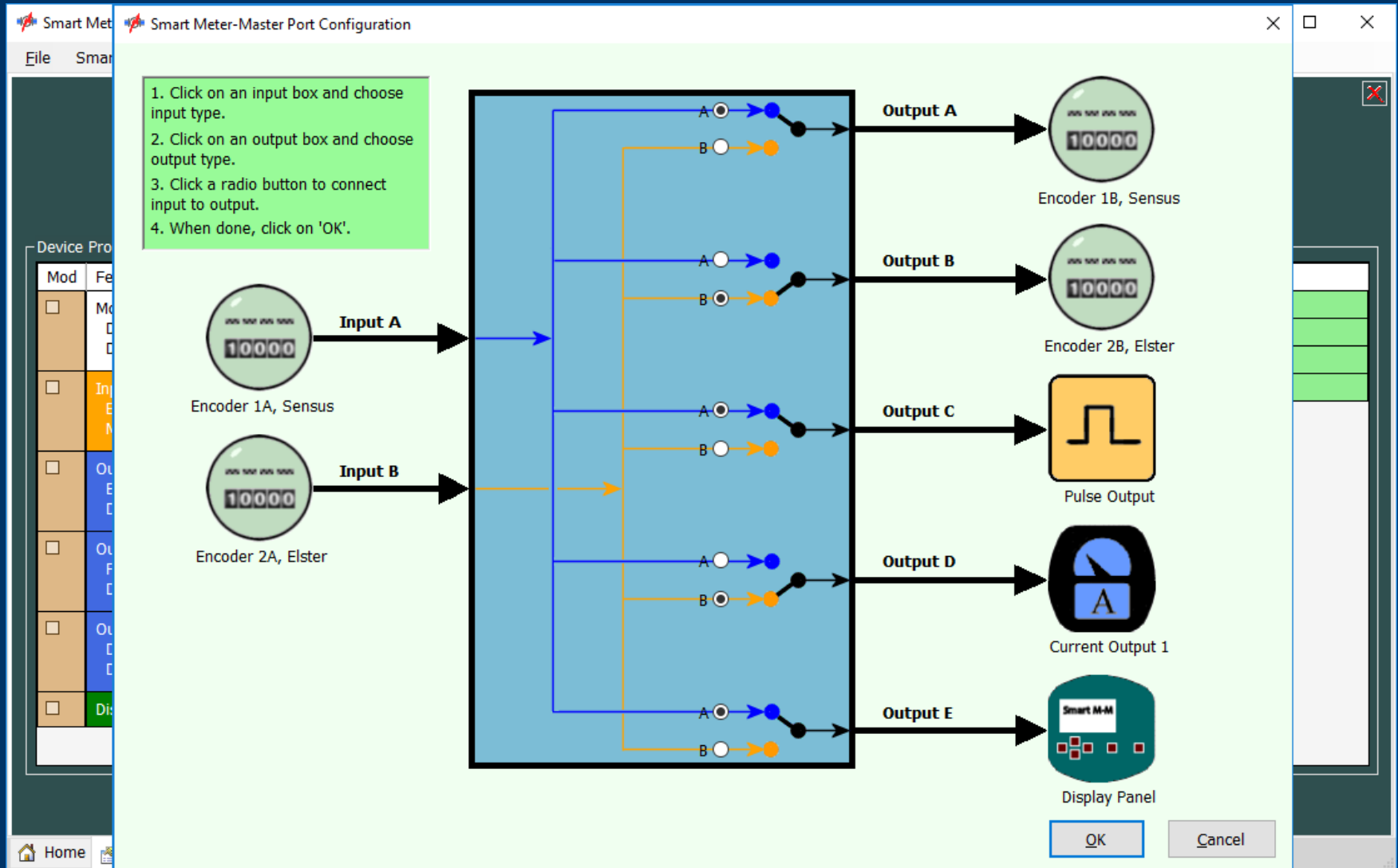
Smart Meter-Master

I/O Capabilities

- Encoder (Sensus, Neptune, Elster)
- 4-20mA, 0-10V
- Pulse
- Magnetic Flux Sensor
- Serial (RS-232, RS-485)



Sample Configuration Options



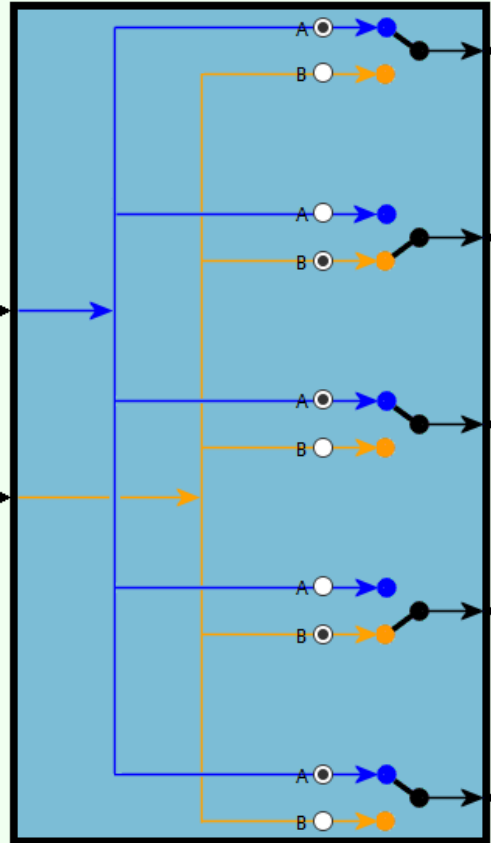
1. Click on an input box and choose input type.
2. Click on an output box and choose output type.
3. Click a radio button to connect input to output.
4. When done, click on 'OK'.



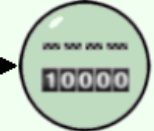
Input A



Input B

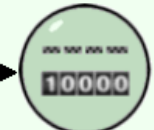


Output A



Encoder 2B, Sensus

Output B



Encoder 1B, Neptune

Output C



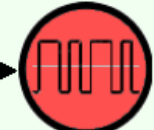
Pulse Output

Output D



Current Output 1

Output E



Serial RS232 Output

OK

Cancel

4-20mA to Neptune Encoder in NC

Smart Meter Master Port Configuration

File Smart

1. Click on an input box and choose input type.
2. Click on an output box and choose output type.
3. Click a radio button to connect input to output.
4. When done, click on 'OK'.

Current Input 1

Port Not Assigned

Input A

Input B

Output A

Output B

Output C

Output D

Output E

Encoder 1A, Neptune

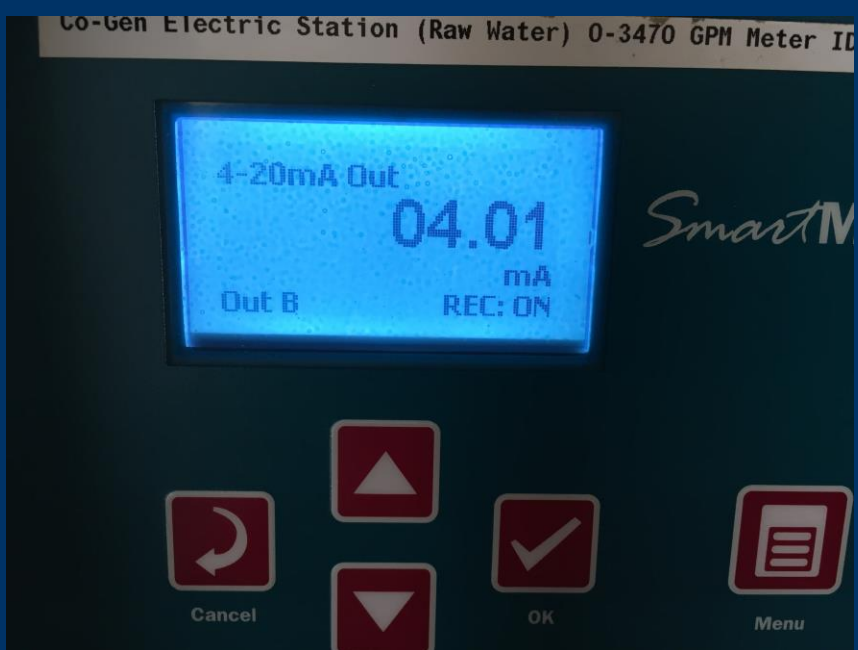
Current Output 1

Port Not Assigned

Port Not Assigned

Port Not Assigned

OK Cancel





Elster to Pulse Output in NYC

Smart Meter-Master Port Configuration

File Smart

1. Click on an input box and choose input type.
2. Click on an output box and choose output type.
3. Click a radio button to connect input to output.
4. When done, click on 'OK'.

Device Pro

Mod	Fe
<input type="checkbox"/>	Me
<input type="checkbox"/>	D
<input type="checkbox"/>	D
<input type="checkbox"/>	In
<input type="checkbox"/>	E
<input type="checkbox"/>	N
<input type="checkbox"/>	Out
<input type="checkbox"/>	E
<input type="checkbox"/>	D
<input type="checkbox"/>	Out
<input type="checkbox"/>	F
<input type="checkbox"/>	D
<input type="checkbox"/>	Out
<input type="checkbox"/>	D
<input type="checkbox"/>	Dis

Encoder 1A, Elster

Encoder 1B, Elster

Port Not Assigned

Input A

Input B

Output A

Output B

Output C

Output D

Output E

Encoder 1A, Elster

Pulse Output

Display Panel

Port Not Assigned

Port Not Assigned

OK

Cancel

NYC Hotel





Elster 3W Input

029120

Cu Ft x100

In A

REC: ON

Elster 3W Out

029120

Cu Ft x100

Out A

REC: ON

Other Client Configurations

Client A


- Sensus OMNI pulse input (wholesale)
- Two (2) discreet 4-20mA outputs for both utility SCADA systems
- All 3 I/O functions powered by Smart Meter-Master


Client B

- Elster 3-wire input
- Elster 3-wire output
- Elster 2-wire output
- 4-20mA output

Smart Meter-Master Software Operator License




 Graphs & Reports

 Download Recorded Data

 Delete Recorded Data

Smart Meter-Master

for Smart Meter Management
Version 1.0.0.219 Meters 99

 Smart Meter-Master Connected

Smart Meter-Master Device Properties

Serial Number:	Device Clock Time:
000000017	Apr 18, 2017 12:49:51
Record Capacity:	Battery:
458,333	No Battery

 Refresh

Input Port Configuration

Input A:	In A:Undefined
Input B:	In B:N/A

Output Port Configuration

Output A:	Out A:Undefined	Output D:	Out D:N/A
Output B:	Out B:N/A	Output E:	Out E:N/A
Output C:	Out C:N/A		

 Configure Device

Configuration Properties

Model:	Configuration Name:	Version:	Options Installed:
1E-EP/BD	90009	273	LCD Display: <input checked="" type="checkbox"/>
Configuration	90009 - Config 2017-4-17 -- Enertiv NY (IN Elst 3W, OUT Elst 3W, Pulse, DsplOnly)		WiFi: <input type="checkbox"/>
Description:			Last Modified: Apr 17, 2017 05:11:36 PM

Device Properties

Mod	Feature	Mod	Property	Value (click to edit)
<input type="checkbox"/>	Modes Data Recording Device Power	<input type="checkbox"/>	Logging Mode	Always logging mode
<input type="checkbox"/>	Input Port A Encoder 1B Measurement Interval = 600.0.	<input type="checkbox"/>	Power Mode	Power Mode Disabled
<input type="checkbox"/>	Output Port A Encoder 1A Data Source = Input Port A.	<input type="checkbox"/>	Sleep Timeout	30
<input type="checkbox"/>	Output Port B Pulse Output Data Source = Input Port A.	<input type="checkbox"/>	External Sensor Power State	Sensor Power Disabled
<input type="checkbox"/>	Output Port C Display Only Output Data Source = Input Port A.			
<input type="checkbox"/>	Display Panel			

Configure Ports

Copy Configuration to Device

Smart Meter-Master Features

- Battery backup
- Data backup
- Meets mfr encoder specs
- Simulate Sensus, Neptune, and Elster encoder outputs
- All I/O values displayed by LCD
- Programmable LCD
- Operator software
- Sensor power
- IP68 submersible